

**Goldbelt Forest Carbon
Overview discussion w
Southeast Conference**

Forests across the US sequester substantial amounts of CO₂.
By maintaining or increasing forest stocking, forest landowners can generate units of CO₂ emissions reductions ("Carbon Offsets").
Companies wishing to combat climate change are willing to purchase these Carbon Offsets, thereby claiming credit for their CO₂ emissions and mitigating some of the effects of climate change.



Offset projects offer a host of environmental co-benefits:
carbon sequestration:

Support biodiversity
Improve water quality
Improve air quality
Erosion control
Habitat connectivity
Recreation



Forestation

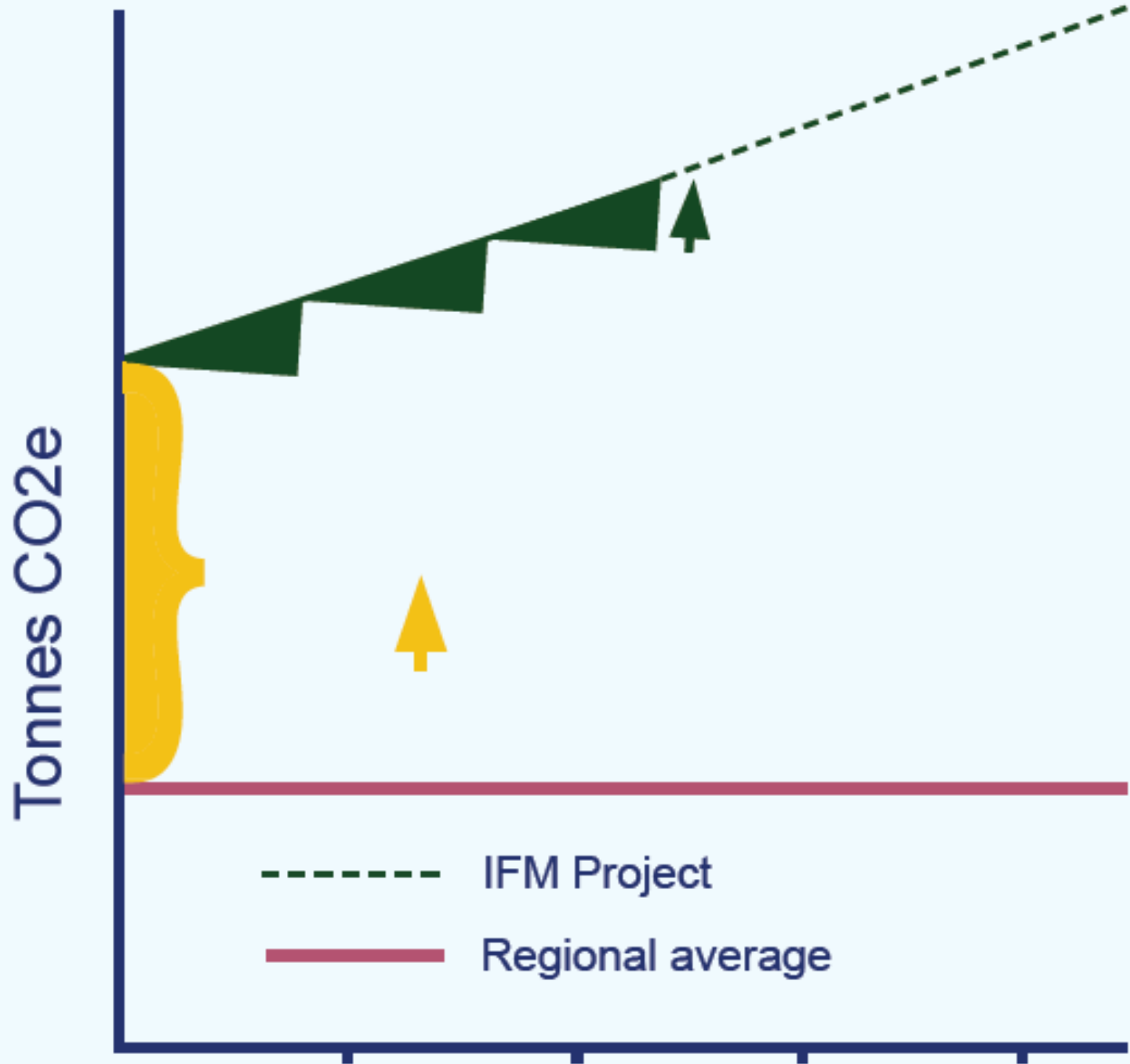
Guided Conversion

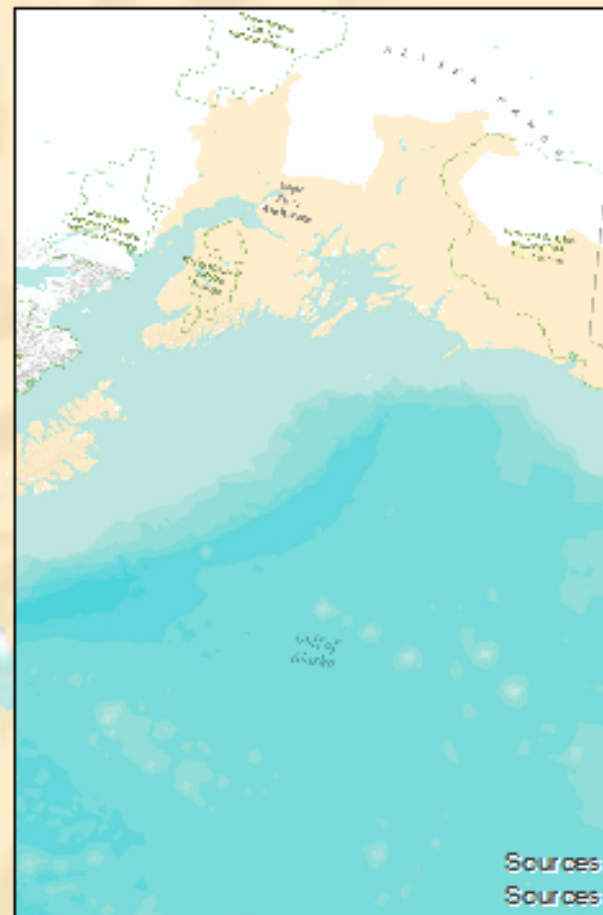
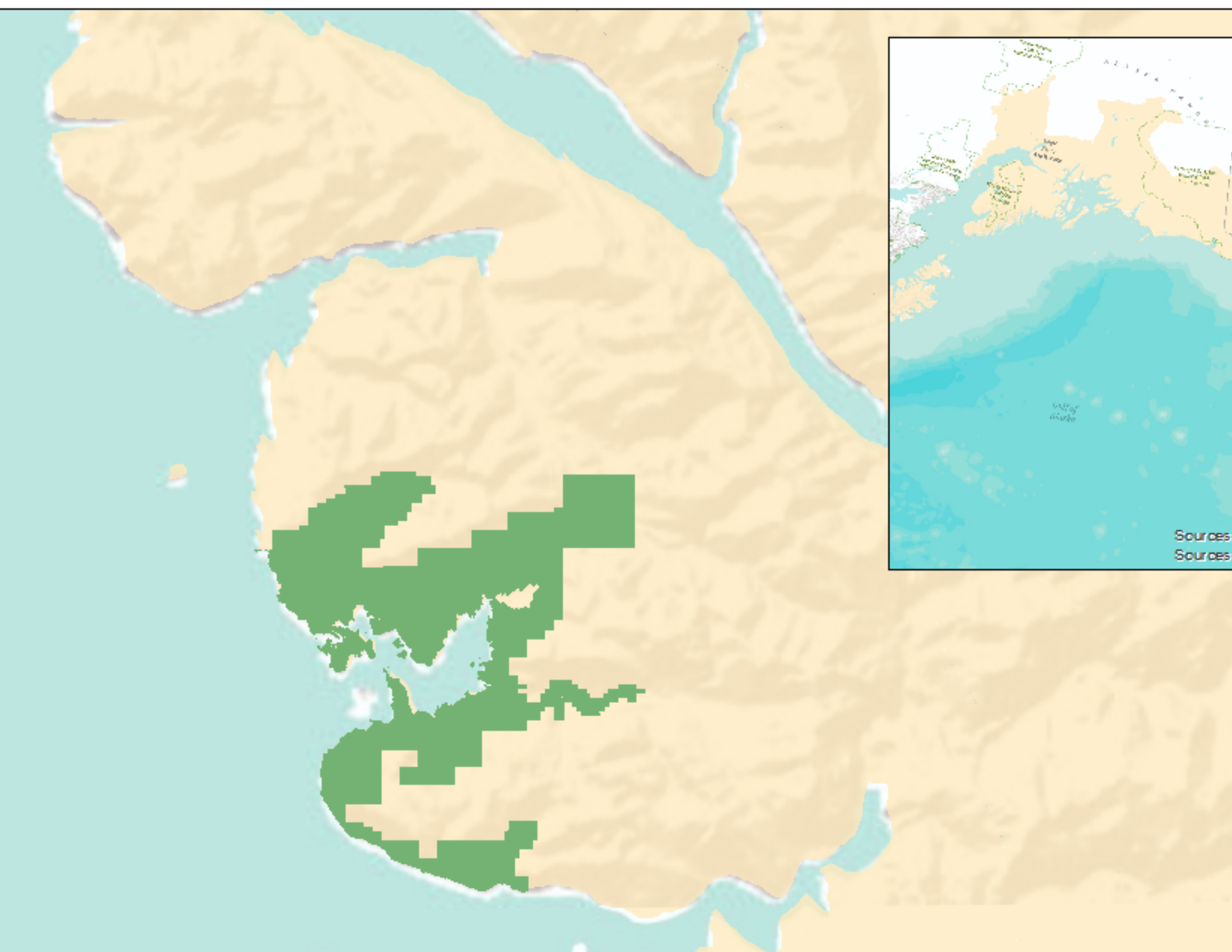
Improved Forest Management

AM



Forest Carbon Stocks





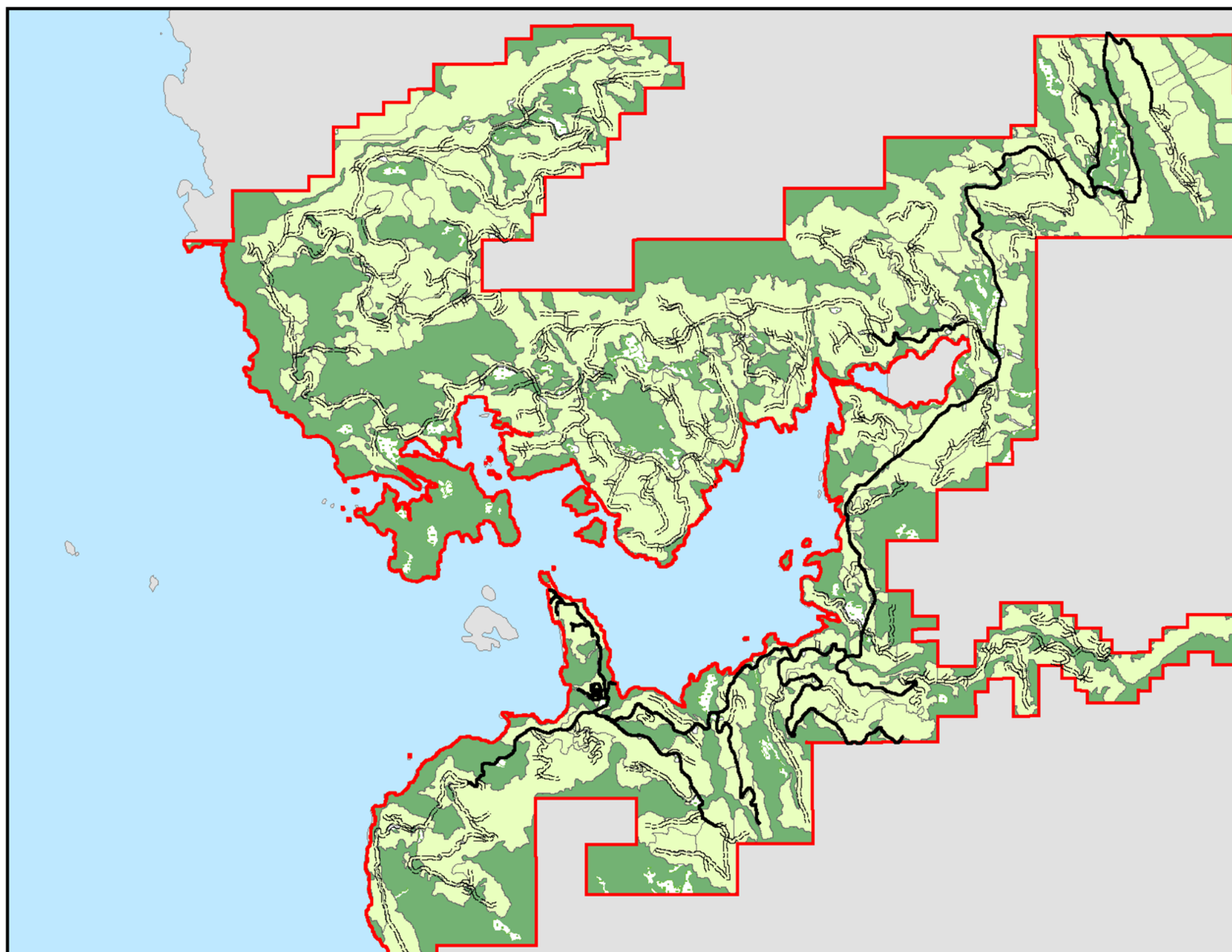
Sources
Sources

Goldbelt Timber Status - Hobart Bay

Road
Old Road
Goldbelt Ownership
Forest by Year
Forest
Growth - Carbon



Scale:
1:100,000
1 inch = 2,533 feet



- Project Feasibility Analysis
- Contracting and Listing
- Inventory
- Modeling and Documentation
- Verification
- Credit Registration and Issuance
- Credit Sale

Management Restrictions

Harvesting should not exceed growth in any year
No even aged harvests on contiguous areas greater
than 100 acres

No use of broadcast fertilizer

Must maintain certification (FSC, SFI, ATFS) *or* have
a State/BIA approved forest management plan *or* no
harvesting on an area greater than 12 contiguous acres

Important to find a balance between timber
harvesting and carbon revenue generation
Project owner can engage in timber harvest
as described in its current forest management

Finance project must be maintained for 100 years following final

ing

Complete forest inventory must be updated at least every 12 years
Monitoring documentation must be updated annually to account for
growth, or significant damage from natural disasters

Verification with a site visit component must be undertaken

Who lead on all monitoring and auditing activities during the first
Goldbelt would manage these activities independently in the year

anks:

e, Roger Williams

e, Brian Kleinhenz

Anthony Mallott

rre

nt of Alaska

